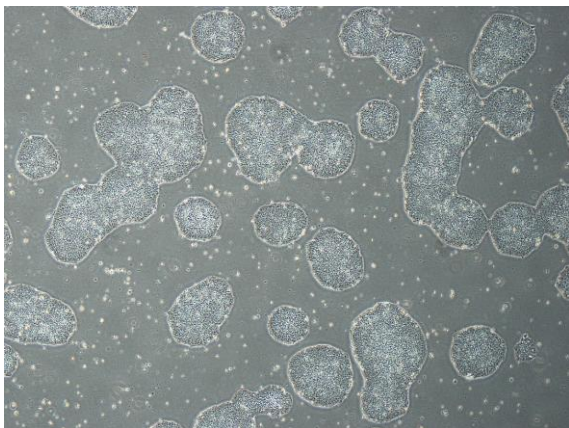
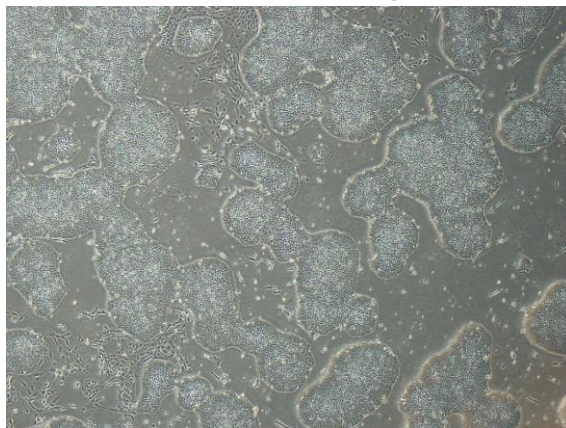


【 CiRA-j-1146 】 Morphology of iPSC colonies

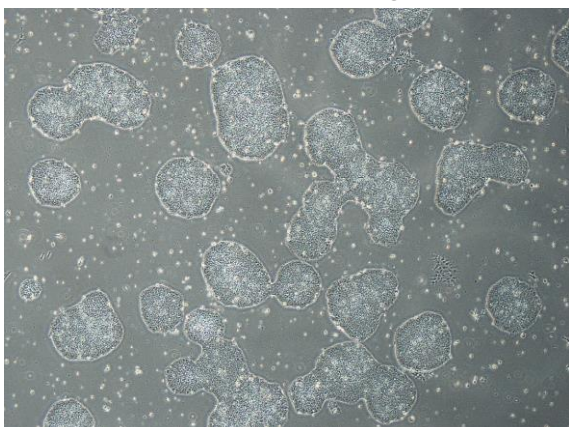
CiRA-j-1146-A: passage-3



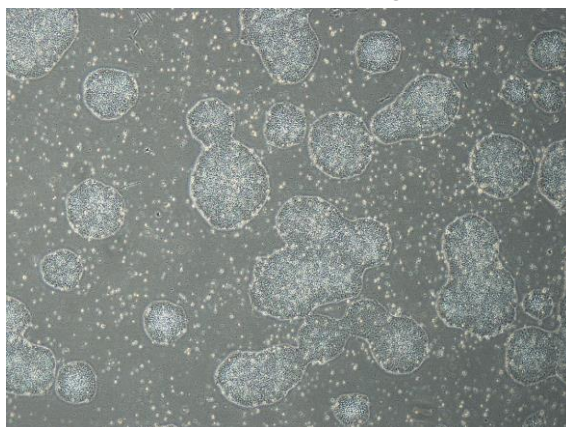
CiRA-j-1146-B: passage-3



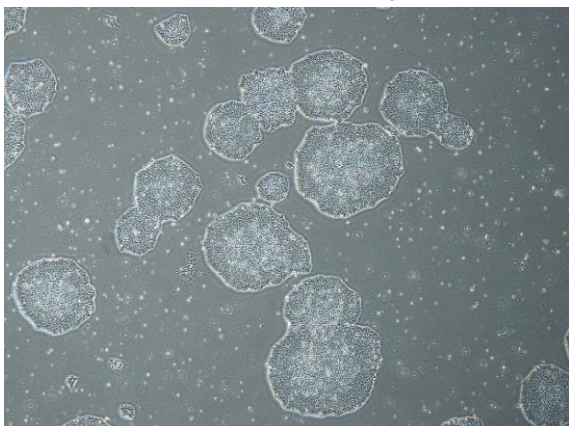
CiRA-j-1146-C: passage-3



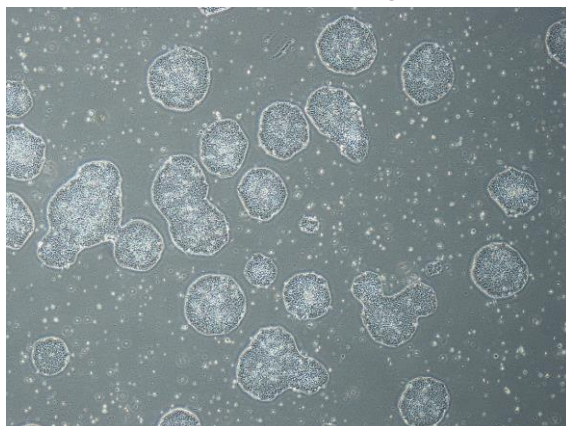
CiRA-j-1146-D: passage-3



CiRA-j-1146-E: passage-3



CiRA-j-1146-F: passage-3



(All images were captured at 4x magnification)